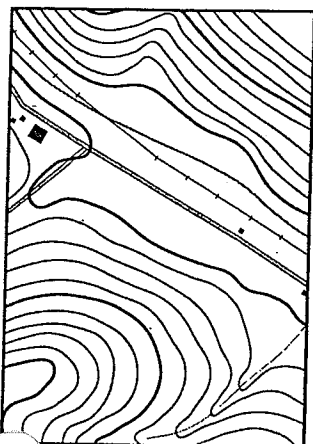


## Topographic Maps



**"I have my own horizon bounded by woods all to myself; a distant view of the railroad where it touches the pond on one hand, and of the fence which skirts the woodland road on the other...I have, as it were, my own sun and moon and stars, and a little world all to myself...."**

**— Henry David Thoreau  
from *Walden***

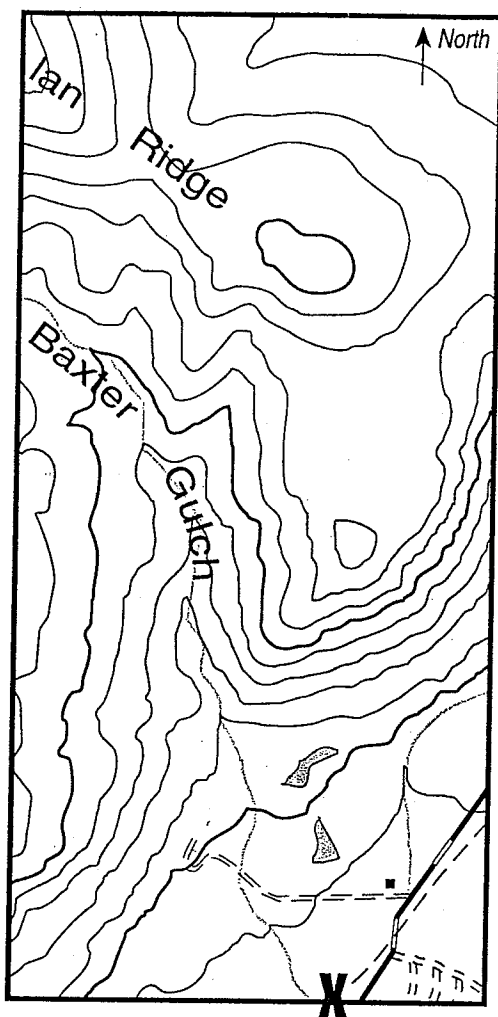
Contour lines...quads...elevation...true north. Welcome to the world of topographic maps.

Topographic maps are also called "topo" (slang for topographic) maps; both are correct and used interchangeably throughout this booklet. Like most maps, they show a portion of Earth's surface by reducing it to a practical size with various symbols representing features in the mapped area. Unlike typical two dimensional maps, topographic maps add a representation of the vertical dimension through the use of contour lines. Each contour line represents a particular elevation above mean sea level. Although other types of maps may show the hills and valleys of the mapped area, the contour lines on topo maps provide much more detail and accuracy. To one who does not understand the markings, lines, and symbols on a topo map, it may well look like some two year old had fun with a light brown pencil. But to a person with a bit of training, these squiggly lines provide a wonderful view

of the countryside.

This "How To" booklet is divided into two sections. The first section provides an overview and background information on topo maps for you, the instructor. The second section is a series of classroom activities to help you teach topo map skills to your students. The booklet includes a topo map produced by the United States Geological Survey (USGS)—a branch of the U.S. Department of the Interior responsible for creating many different types of maps, including topographic maps. (For more information about USGS—including how to get topo maps of your particular location—see the Resources section of this booklet.)

A note about the metric system: the topo map with this booklet will probably have both English and metric scales at the bottom center, although most measurements—elevations, margin notes—will be in the English system. Most newer USGS maps have both measurement systems.



Standing at the "X" on the topo map (above left), someone looking north would see the scene depicted above, right, including the secondary highway, streams, house, unfinished roads, ponds, and mountain ridges.

## The Problem of Visualization

Many people have a difficult time visualizing three dimensions from two. In fact, some have a terrible time transferring from any drawing to the real thing. A number of your students may never, in the time you have available, develop the ability to look at a flat map and see a three-dimensional surface.

This problem is rather surprising because we live in a world filled with two-dimensional images of three-dimensional objects. Every day, most people view and understand photographs and television images as representations of three dimensions, yet

maps still present a problem. This ease of transition may be because the objects on TV or in a photograph are familiar and those on a map are not, but the problem remains even when the map being used is of the student's home town area. A more likely possibility is that they are confused by the point of view.

Maps look straight down on Earth's surface and people rarely look at Earth that way even from an airplane. Our views are nearly always oblique—that is, from angles which are not parallel or perpendicular. (See Figure 1, above.) Show students an oblique photo of a landform near their homes and very few have difficulty identifying the location.

**Figure 1 • Topo Map View vs. Actual View**

# Topographic Mapping Symbols

	Primary highway, hard surface		Boundary: national
	Secondary highway, hard surface		Boundary: state
	Light-duty road, hard or improved surface		Boundary: county, parish, municipio
	Unimproved road		Boundary: civil township, precinct, town, barrio
	Trail		Boundary: incorporated city, village, town, hamlet
	Railroad: single track		Boundary: reservation, national or state
	Railroad: multiple track		Boundary: small park, cemetery, airport, etc.
	Bridge		Boundary: land grant
	Drawbridge		Township or range line, U.S. land survey
	Tunnel		Section line, U.S. land survey
	Footbridge		Township line, not U.S. land survey
	Overpass/Underpass		Section line, not U.S. land survey
	Power transmission line with located tower		Fence line or field line
	Landmark line (labeled as to type)		Section corner: found/indicated
			Boundary monument: land grant/other
	Dam with lock		Index contour
	Canal with lock		Supplementary contour
	Large dam		Mine dump
	Small dam: masonry/earth		Dune area
	Buildings (dwelling, workplace, etc.)		Sand area
	School/Church/Cemeteries		Tailings
	Buildings (barn, warehouse, etc.)		Glacier
	Tanks; oil, water, etc. (labeled only if water)		Perennial streams
	Wells other than water (labeled as to type)		Water well/Spring
	U.S. mineral or location monument/Prospect		Rapids
	Quarry/Gravel pit		Channel
	Mine shaft/Tunnel or cave entrance		Sounding/Depth curve
	Campsite/Picnic area		Dry lake bed
	Located or landmark subject/Windmill		Woodland
	Exposed wreck		Submerged marsh
	Rock or coral reef		Orchard
	Rock: bare or awash		Vineyard
	Horizontal control station		Mangrove
	Vertical control station		Scrub
	Road fork/Section corner with elevation		Wooded marsh
	Checked spot elevation		Bldg. omission area
	Unchecked spot elevation		
			Intermediate contour
			Depression contours
			Levee
			Large wash
			Tailings pond
			Distorted surface
			Gravel beach
			Intermittent stream
			Aqueduct tunnel
			Falls
			Intermittent lake
			Small wash
			Marsh (swamp)
			Land subject to controlled inundation

From *Topographic Maps* (Issued by the U.S. Department of the Interior/Geological Survey) U.S.G.P.O.: 1990-252-213

Show the same students an aerial photo of an equally familiar area and many will be clueless. It may help you to create a bulletin board display of the local area using maps plus aerial and oblique photos. (See the Resources section for information on how and where to obtain aerial photos.)

### Why Teach Topo Map Skills?

With that caution in mind, is it worth the time and effort to teach topographic map skills? It is indeed, precisely because of the problems students encounter trying to visualize three dimensions from two. Once students begin to grasp this concept, they will be able to use this skill in other areas quite remote from Earth science, such as visualizing a complete three dimensional house from a set of two-dimensional house plans or a

completed dress or shirt from a pattern.

More directly, an ability to read topo maps might help students: understand land use, highway, and railroad planning as well as flood plain and flooding problems; identify geographical features such as mountains and stream systems; and learn about routes of historical trails, forts, battles, and settlements, as well as political boundaries. Many ghost towns which have been dropped from typical highway maps are still listed on USGS topo maps.

In the Earth sciences, topo maps are especially valuable in dealing with landforms such as mountains, stream systems, plateaus, glacial features, and plains because of their ability to depict three-dimensional features. If students know the basics of landforms, working with topo maps will reinforce and allow them to apply their knowledge.

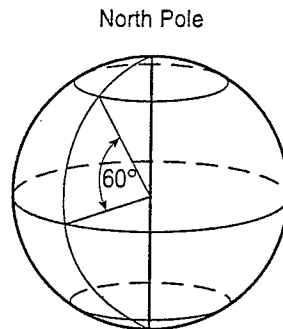
**Figure 3 •  
A Reminder About  
Latitude and Longitude**

A degree of latitude or longitude is actually a measurement of arc following the curve of Earth. Mapmakers devised latitude and longitude so they could accurately represent Earth on their maps. Lines of latitude—called parallels—circle the globe parallel to each other and are measured in degrees north or south of the equator. The equator is the 0° parallel, circling at the middle of the globe. Longitude lines—or meridians—are lines from pole to pole and are measured east and west from the Prime Meridian to the International Date Line.

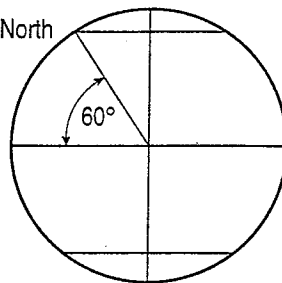
One degree of latitude or longitude—or arc—contains 60 minutes of arc.

Further, one minute of arc contains 60 seconds of arc. An example of the coordinates for a specific location somewhere on the Earth would be 45° 21' 34" N by 109° 38' 3"W. The first string of numbers is "45 degrees, 21 minutes, 34 seconds north latitude" and the second is "109 degrees, 38 minutes, 3 seconds west longitude."

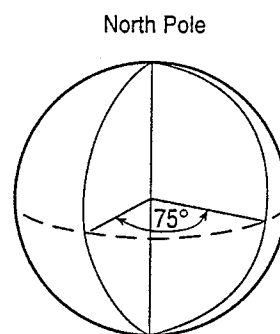
#### Latitude



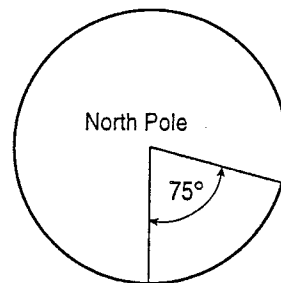
North Pole



#### Longitude



View looking down from above the North Pole



Longitude = 0°  
(Prime Meridian)

## Touring a Topographic Map

If you have not spent a great amount of time with topographic maps, this section may be a valuable review. If you are already quite familiar with them, skip on to the section titled "The First Step."

Map reading always starts with the information found in the margins. (See Figure 8 on page 12 for a detailed diagram of the information in the margins of a topo map.) On a topo map, the top margin lists who produced the map, and, in the upper right, the name of the map and the series. The map name is usually the same as a prominent feature—a town, city, or physical feature such as a mountain peak—in the map area. The map accompanying this publication is likely to be a 7.5- or 15-minute series. (These numbers refer to the dimensions of the topo map. A 7.5-minute series map is 7.5 minutes of latitude by 7.5 minutes of longitude. See Figure 3: A Reminder About Latitude and Longitude on page 5.)

To check the series of your topo map, subtract the latitude of the lower right corner from the latitude of the upper right corner. This number should be the same as the series number. Likewise, subtracting the smaller longitude from the larger should produce the same number.

Because these maps have four equal sides in terms of degrees of latitude and longitude, they are called *quadrangles* or *quads*. At this point one is faced with the realization that a degree of latitude is not the same length as a degree of longitude. The length of a degree of latitude stays the same worldwide but degrees of longitude differ depending upon distance from the equator. Confused? Look at a globe. At the north and south poles, a degree of longitude becomes infinitely small.

The bottom margin holds a wealth of information. One important piece of data is the declination—the difference between true north and magnetic north. A compass in most of North America will not point to true north—true north being the north pole. The indicator in the bottom margin shows the difference between true north and magnetic north

for people using the map for precise location. Further explanation of this difference is not necessary for most classroom uses of the maps.

## A Quick Review of Scale

Another important element in the bottom margin is the scale of the map. The scale of the map which accompanies this booklet is likely to be 1:24,000—that is, a 7.5-minute series map. This means that one unit of measurement on the map is equal to 24,000 of the same units on the Earth's surface. For example, 1 cm on the map equals 24,000 cm on Earth. It may be easier to think of the scale as saying that the map is 1/24,000th the size of the area it represents. The larger the second number in the ratio—in this case 24,000—the less detail the map can show. Scales are also used by architects and model makers when they create scaled-down versions of houses, cars, or airplanes.

The entire country has been mapped at a scale of 1:250,000. These maps show an area of 1° latitude by 2° longitude. They are useful because each one shows a much larger portion of the countryside and contain amazing detail considering the scale. They are fine for general work but are difficult for students to use for detailed investigation. One advantage of the 1:250,000 maps is that matching plastic raised relief maps are available. You might want to consider using these maps to aid students in the visualization step. Originally produced by the Army Map Service, the raised relief maps are now available commercially.

The bottom margin also includes sample linear scales in various units, the contour interval (more about this later), the name and publication date of the map, and technical information about the production of the map.

## Inspecting the Map

Now let's look at the actual map. If your map is of an area west of Ohio, it is likely that there are vertical and horizontal lines crossing it. To interpret these, look in the margin at either end of the line. The

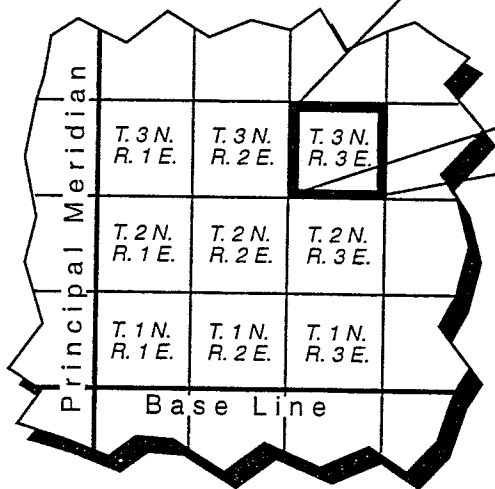
numbers, or numbers and letters, tell what the line indicates. If the numbers are degrees, minutes, and seconds, or just minutes and seconds, the line must be one of either latitude (horizontal) or longitude (vertical). If the label is something like T33N or R78W then the line indicates a change of township or range.

Township and range are terms used in a surveying system throughout much of the United States west of Ohio—the government land office grid system. As territories were claimed by and later joined the United States, they were divided into units of land measuring six miles on a side. These units were numbered north or south of a selected parallel of latitude called a *base line* and east or west of a

selected meridian of longitude called a *principal meridian*. In each territory, north or south measurement is called *township* and east or west measurement is called *range*. The actual six-mile by six-mile area of land is called a *township*. (See Figure 4, below.) Each township was sub-divided into 36 1-mile by 1-mile units called sections. Sections are identified by a number—starting with 1 in the NE corner of the township. The diagram shows the numbering pattern. Look at the map and see if there is a grid of squares about 3 inches on a side which, generally, have a number in the center. (Remember, if your map is of an area east of Ohio it will probably not have these markings.) If so, these are sections. They are handy for estimating distance or area. The land

**Figure 4 • Township and Range Grid Pattern**

In the government land office grid system, most land west of Ohio has a precisely defined position. Using 36 principal meridians and base lines, the system breaks land down into 6-mile by 6-mile townships. Each township is further subdivided into 36 1-mile by 1-mile sections. Although the naming system is straightforward, it can be confusing to the unfamiliar.

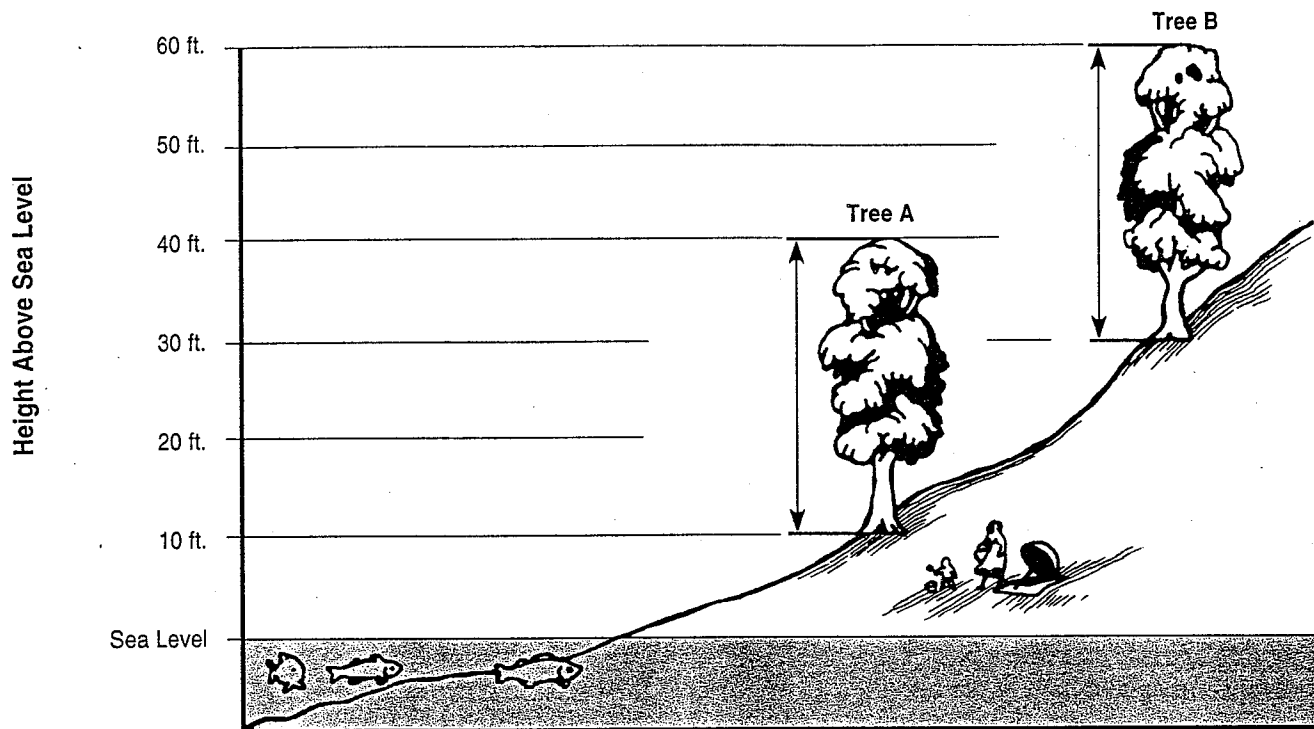


Township 3 North, Range 3 East

6	5	4	3	2	1
7	8	9	10	11	12
18	17	16	15	14	13
19	20	21	22	23	24
30	29	28	27	26	25
31	32	33	34	35	36

While the states comprising the original 13 colonies do not adhere to the land office grid system, most other states do. This is a result of the desire to create a standardized system for the immense territories the U.S. began to acquire in the 1800s, such as the area of the Louisiana Purchase.

The General Land Office was created by the federal government in 1812 to develop such a system. The system they created is still used today—the one diagramed above. The General Land Office became the Bureau of Land Management (BLM) in 1946. (While official topographic mapping is done by the U.S. Geologic Survey, the land office grid system is administered by the BLM. Both agencies are part of the U.S. Department of the Interior. For more information on how to reach these agencies, see the Resources section on page 23.)



Height and elevation are different. Although both trees pictured above are 30 feet tall—that is, their *height* is 30 feet—the top of Tree A is at an *elevation* of 40 feet above sea level. The top of Tree B is 60 feet above sea level.

**Figure 5 •  
Height vs. Elevation**

office grid system is important as it is used for legal land description.

The map itself contains the usual map features—towns, roads, etc.—in various colors and sizes to indicate importance. One feature, however, may not be familiar to students. It sets topographic maps apart from all other maps and it is why you are reading this booklet. The special feature is squiggly brown lines running all over the map. These lines are called *contour lines*.

### Contour Lines

Look at the contour lines on your map. Note that some of them are thicker than others. Select one of these thicker lines and follow it. Somewhere along the line there will be a number, also in brown, written in the direction of and in place of the line. This is the elevation of the line. Elevation is the height—in feet or meters—above sea level of a particular point or line. (See Figure 5, above.) Every

point along that line is at the same elevation—as shown by the brown number. In the past, a surveyor in the field would measure and plot a number of points at the same elevation and then connect these points with a line. This led to the definition of a contour line as being a line connecting points of equal elevation. Today, most of the work is done with aerial photos and the definition, though accurate, has less significance. Two points to remember: a contour line *never* goes up or down hill and contour lines *never* cross each other.

The vertical distance between contour lines is called the *contour interval*. (Remember it from the bottom margin?) Going from one contour line to the next, one goes up or down one contour interval. The simplest way to decide if it is up or down is to check labels on the thick contour lines. The contour interval used varies from map to map, depending upon the terrain. In Wyoming, most topo maps have a contour interval of 20 feet,

in Florida a contour interval of 2 feet is appropriate, and a topo map for an area in the Rocky Mountains west of Denver lists 80 feet as the contour interval.

By locating the closest labeled contour line and then counting lines, one can determine the elevation of a point. However, resist the temptation to guess between lines. (See Figure 6, below.) The map tells exactly what the elevation is at a specific line, but it does not tell what happens to the land area between the lines. The only safe way to give the elevation of a point between the lines is to give the elevation of both adjoining lines. For example, between 4,020 feet and 4,040 feet.

The most important rule to know about topo maps is also the easiest to remember: "The closer together the contour lines, the steeper the slope." Using this rule one can take a glance at a topographic map and have some idea of the terrain. It becomes more significant if one looks at the contour interval first. A few contour lines close together with a contour interval of 2 feet do not indicate the same sort of obstacle they would if the contour interval was 80 feet.

One other handy bit of information: when contour lines cross a stream they form a "V" that points upstream. (This is

known as the rule of the "V"s and is investigated further in Activity Ten: Down the Drainage Plan.) Knowing that, it is easy to tell the direction of stream flow. Ask students why this is true and see if they can explain.

## The First Step

It is probably worth your time to construct a three-dimensional model from a topographic map so students have a middle step in their visualization. Using the typical plastic raised relief map helps but they are too smooth to make the idea of the lines stand out. A built-up map can be constructed without much difficulty by using foam core board (1/4"-thick board makes the vertical and horizontal scales about the same when working on a 1:24,000 scale map.) Foam core makes a better looking map than corrugated cardboard. With either medium, lots of time will be spent in cutting and gluing and one might as well invest a few dollars to have a nice looking product. Instead of trying to make an entire map, it may make more sense to build up a quarter or so of the map that is the most interesting. A small segment will get the point across as well as a complete map.

Figure 6 • The Problem with Predicting

The figure at right shows why the only safe way of giving the elevation of a point not directly on a contour line is by saying, the point lies between the elevations of the two nearest contour lines. The dashed line represents a predicted elevation. But as the actual profile—the solid line—shows, the terrain can vary from the predicted line. In the bottom example, the actual elevation of the midway point between 4000 feet and 4020 feet is about 4003 feet, not the halfway value of 4010 feet that the predicted line shows. The upper example shows the same possible error, this time the predicted elevation—4030 feet—is eight feet less than the actual elevation at the midway point, which is 4038 feet. Topo maps offer an enormous amount of information, but readers can't "guess" between the lines.

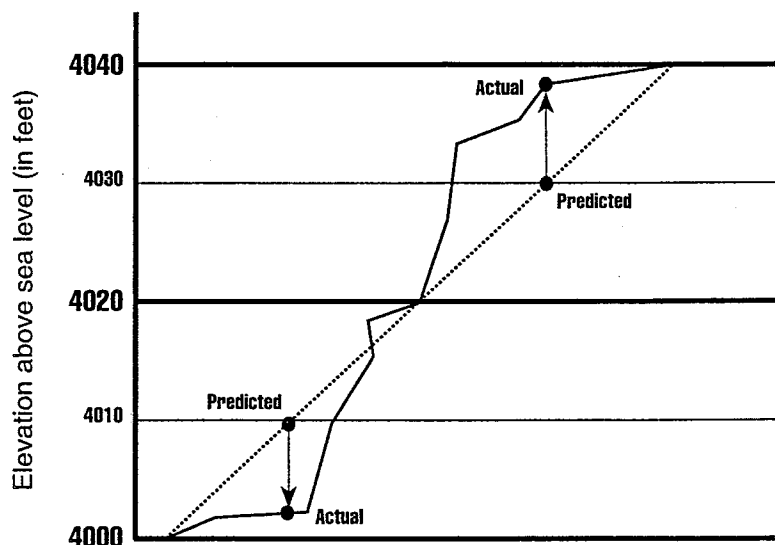


Figure 7 • Assembling a 3D Topo Map



## Directions for a 3D model of a topo map

**Step 1:** To make the foam core map, select a relatively easy portion of the map. For example, do not pick an area where the contour lines are so close together that tracing is difficult.

**Step 2:** Either make photocopies or place a piece of tracing paper over the map and trace only the thicker contour lines—the lines with elevation numbers in them.

**Step 3:** Use carbon paper to transfer each dark contour line to a different piece of foam core. Also mark the next layer with a dashed line. (This will help you align the foam core pieces later on.) It is a good idea to label elevations on each piece to help when stacking the layers. Don't forget a base piece which represents the lowest elevation in the area.

**Step 4:** Cut along the solid line on each piece, beginning with the largest piece first. (Remember the dashed line is for help in placement—not for cutting.) Cutting can be done with a knife but is much easier with a scroll saw. A very fine blade makes it possible to cut more accurately.

**Step 5:** Stack as you cut, making sure that the pieces are aligned.

**Step 6:** Glue the pieces together, working from the smallest, top pieces down. White glue works fine. Once you have a sample for students to see, some of them may want to do built-up maps of their own for the classroom.

A set of these showing the vicinity of your school is a valuable asset. If you don't have a topo map of your school area, maybe groups of students will want to work on different sections of the topo map you do have—adding

them all together to create one large representation of the entire map.

## Activities for Your Students

Once you feel familiar enough with the material in the introductory section above, the following activities will help your students explore and understand topo maps. It is highly recommended that there be a map for every three or four students in your class. (Maps are available from the USGS—see the Resources section at the end of this booklet for the address—and often from local map or camping stores.) Laminating the maps before you pass them out is a good idea. This will allow students to write on the maps with washable markers—the type used for transparencies.

If you can't get that many, you could photocopy the map that came with this booklet in sections, taping together the pieces to form a complete map. But be careful if you do this because the quality of the maps, especially the contour lines, may be so degraded that the maps are essentially unusable. Also, all colors become black on standard photocopies.

Each activity has two sections: the first is information about the level of the activity and the skills it will help develop as well as materials you will need. The second section is the actual activity. It directs you, the instructor, in approaches you might use and suggested questions you might ask. Don't feel confined by the language of the activity. If you want to ask for more information, or revisit past concepts, please do. The activities are to be used as guides, not absolutes.

### Activity One

#### What's in a Name

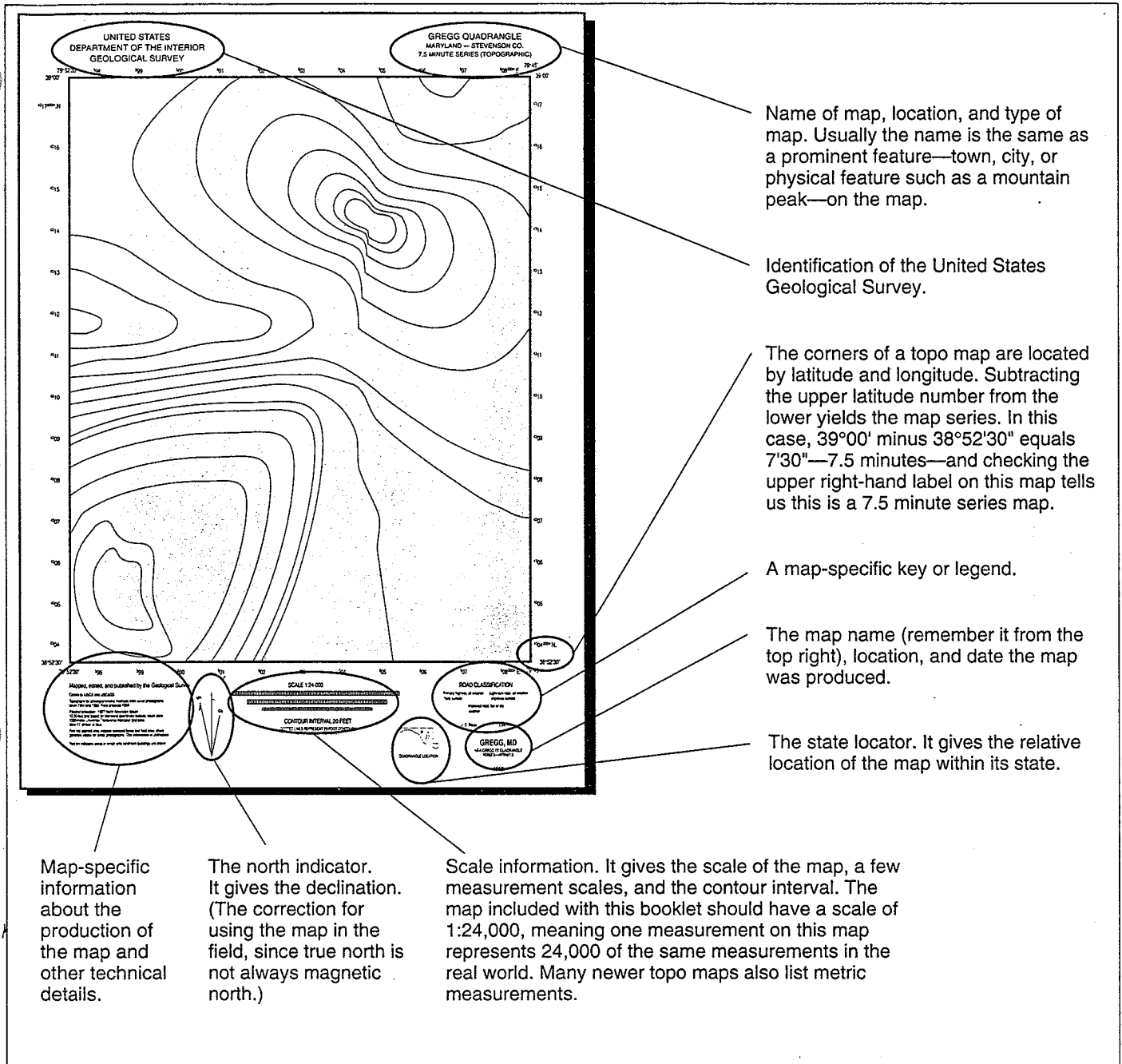
*This activity will help your students get acquainted with the map by asking them to locate some basic margin information. They will need to look at a map for the answers, so a map should be available for them to investigate. Be aware that your students probably will ask about other information in the margin. Be prepared to answer briefly*

*and save a thorough discussion of it until the later, appropriate activity.*

Ask your students to explore the margins for information. Direct their attention to the upper right of the map—where the map's title is located—and the lower right—which lists the date it was prepared. Keep in mind that if a map was prepared some years ago there may have been changes in the landscape since that time. The title of the USGS topographic map is always that of a prominent feature, often a town, located on the map. Challenge the class to find this title geographic feature on your map. Ask your students what they would guess the origin of the name is. Does it appear that this feature was named for a person or for some characteristic of the feature? In what state is the area depicted on the map located? Is anyone in your class from that state? The class might like to collect material about their map state—photos, videos, books, perhaps even rocks and plant material (or information about them), as well as other maps such as state highway maps, historical maps, or maps from an atlas.

What other information is there in the margin? See Figure 8 on page 12 for a diagram of what information exists where. Symbols, scale, and contour intervals will be treated in later activities.

Ask the class what direction north is on the map. Ask them how they know. Did they use the indicator on the map? Discuss the standard map representation of north being the top, south the bottom, east to the right, and west to the left. Is this true of other maps in the classroom? At home? Ask the students why almost all maps use this designation. Reinforce that many types of maps are used by many different people and a standard way of representing north is necessary. (Historically, the standard apparently developed in Europe in the 1500s as more and more maps were drawn and a standard was necessary.) Ask students to imagine what it would be like to try and read different maps today, if north was not standardized to be toward the top of a map. What problems might arise?



**Figure 8 • Dissecting a Topographic Map**

### Activity Two

## What Do All These Symbols Mean?

This activity introduces students to the symbols used on topo maps. (Nearly 100 symbols are defined by the USGS for use on topographic maps.) Students will need maps and copies of keys for symbols. (The key used in this booklet on page 4 lists nearly all the symbols students will encounter. The USGS also has keys.) Note that many of the symbols are in color. Since photocopiers do

not reproduce color, some of the symbols may be confusing if the key is copied. Using original topo maps and sharing the key on page 4 will give the best results.

Topographic maps show many features. Ask the students to find an easy symbol, like a building. Then ask students to find as many symbols as they can on the map. Make a game out of it. Which team of four or five students can locate the most symbols? Which team can locate the most, different symbols? Create a master list of the symbols the students find. They

may find symbols not identified by the key included in this booklet. If you don't have the full key from the USGS, ask your students what they think the symbols represent.

Students will likely query you about the brown contour lines and numbers. If they don't, direct their attention to them. Discuss elevation—distance (on these maps it's usually in feet) above sea level. Find the two ways elevations are marked on topo maps. The first is as a number, also in brown, and written in the direction of and in place of a contour line. This signifies the elevation of that contour line. The second is called a summit elevation. It is usually marked in brown next to a small brown "x." Summit elevations give an actual elevation reading of the spot where the "x" is. Usually these are mountain peaks or summits. What is the highest elevation anyone can find written in the numbers on the map? What is the lowest elevation? (Soon we will learn to interpret the contour lines.)

### **Activity Three**

## **Understanding Scale**

*This activity explores the concept of scale. Again, students will need a topo map and measuring tools (rulers, meter sticks, tape measures).*

If your students found the scale in the first activity, redirect their attention there now. Otherwise, draw your students' attention to the bottom margin. Tell students most maps have a scale. Ask them why? Ask them how useful a map without a scale would be? Would there be times when no scale is needed? Ask students to find the scale of the topo map. It's at the bottom center of the map. On the topo map that comes with this booklet, the scale will probably be 1:24,000. Explain that the scale is actually a *ratio*.

Define ratio as a relationship between two things. In this case, between the map and the real-life area the map represents. This means one of any unit, say one centimeter, on the map represents 24,000 of that unit on the ground or 24,000 cm. Mark 1 cm on the map or have the

students mark it on their maps. Describe going to the actual site of the map and measuring 24,000 centimeters on the ground. Now encourage the students to see one finger length on the map as 24,000 finger lengths at the actual location. Have them invent things to use as measures—one hand length, one stick of gum, one shoelace, one black licorice whip, one small snake (imagination, please) equals 24,000 of these actually laid end to end on the ground anywhere in your map area. Other topo map series will have different scales, but scale will always be the same within a series. A 15-minute series quadrangle has a scale of 1:62,500.

You may want to review the discussion of scale in the introduction for examples and wording.

### **Activity Four**

## **Using Latitude and Longitude to Locate the Map**

*This exercise should be used only if students have already been introduced to longitude and latitude. Students will again need their topo maps, but this time they will also need additional maps that show a larger portion of Earth—like a state or a region. These larger maps should have latitude and longitude marked on them at intervals no greater than two degrees. If the intervals are larger it becomes difficult to locate a topo map with any accuracy.*

Ask students how they would visit the site of the topo map. The students could use the name of any prominent feature (town, mountain) and see if it is on a larger atlas or state map. They might also come up with other ways of locating the site of the topo map. Direct the discussion to the best and most accurate way: using latitude and longitude. Locate a state map, perhaps from an atlas, that shows latitude and longitude. An encyclopedia map most likely will not do—detail will not be great enough. Ask the students to find the latitude and longitude of the topo map. The notations are at each corner of the map. Help students locate their topo map between two lines of latitude (top and bottom of



**Figure 12 • Hikers Using a Topographic Map**

A little math. Using the information above, how many nautical miles from the bottom of the map to the equator?

*Answers will vary.*

A little more math. How many statute miles—the ones we use to measure highway distance—from the bottom of the map to the equator?

*Answers will vary. (Teacher Note: Depending upon your class and the time and resources available, you may want to provide the two lengths. Most students should be able to find this without help.)*

Just to let you check your work, two more math problems: How many nautical miles from the bottom of the map to the top?

*Answers will vary depending on map scale.*

How many nautical miles from the top of the map to the North Pole?

*Answers will vary.*

Reflect on the last few answers. Consider what you know about the angle between the equator and the pole and what you know about degrees and minutes and miles. Do your answers make sense? Do a proof.

Can you do this same process for longitude?

*No, minutes of longitude vary in length from the equator to the pole.*

Look at the map area. It is likely that there is a grid of squares drawn on it. Earlier you learned about Township, Range, and Section. These squares are the sections. (Remember, most areas east of Ohio probably don't have Township, Range, and Section coordinates.)

How big are the sections? If you don't remember, use the scale at the bottom of the map. (Look for the typical section. You may have noticed that some of them are a strange shape. Think about what might have caused this problem.)

*Answers will vary depending on map scales and students' understanding of sections.*

Now that you have a handy measuring tool, how wide is the area shown on this map? (That is the east-west distance.)

*Answers will vary.*

How far north-south?

*Answers will vary.*

Let's see if you can find the other pieces of the Township, Range, Section system. Look in either side margin, right along the edge of the mapped area. Somewhere along here you will find a T and a number followed by either an N or an S. These are the township numbers. You should have found a couple of them close together and the line beside them is the boundary between townships. Use the same technique along the top or bottom to find the Range numbers.

Which section is in the southwest corner of your map? Remember, this is always written as section, then township, and then range.

*Answers will vary, but the format should be*  
 Sec \_\_\_\_\_ T \_\_\_\_\_ R \_\_\_\_\_.

Now that you have two locator systems under control, it is time to consider the features on the map.

If there are green areas, what do they represent?

*Vegetation, usually woodland. Check your key from the USGS for specifics.*

Perhaps there are stippled areas. If so, what do they tell you?

*Usually these areas represent sand or gravel. Again check the USGS key.*

## Activity Thirteen

### Mapping Out the Schoolyard

*This activity involves outdoor schoolyard time. As with activity twelve, some basic parameters will be needed. Students will need measuring tools, such as a long tape measure (or even a long rope—which can be measured and used as a measuring device) and paper for note taking in the schoolyard. Check with the principal to see if there is a set of blueprints or plans for the school site that you could use to map out the schoolyard.*

Map an area of your own schoolyard. This project will require choosing and measuring an area, and then relating that area to a piece of paper using a scale such as 1 cm to 100 cm. Choose an appropriate scale that will fit. Have students measure and place various objects on the map.

To determine elevation, students can use rise and run. Use a meter stick, a short ruler, and a small level. Attach the level to the meter stick with masking tape. Place one end of the meter stick at the highest point. Level the meter stick to the ground. Swing the meter stick around keeping it level, to determine what will be a logical contour interval. (A 10-cm drop will often work.) Place a marker where the short ruler touches the ground. Swing the meter stick around in a circle, marking points where it touches until there are enough points to create a contour line. Move the meter stick down to one of the other markers. Repeat the process for more contour lines.

## A Classroom Discussion

### A Topo Map Exploration

One of the authors, Dana Van Burgh, has been teaching topo map skills for many years. The following example from his advanced class combines some of the above activities into an integrated work period led by the teacher. This series of questions works well with students early in their work with maps. It forces them to closely examine the maps, and makes them use the map as a tool for further investigation. This series also works well as a review.

The following exercise can be done individually or in small groups. Teachers using this material will have to adapt it to the map or maps they own and to their area of the country. Please note that many of the answers to the questions that follow are “answers will vary.” The answers will vary depending on the maps your class is using, grade level, and the students’ background in maps. The exercise should result in an engaging discussion, not an oral quiz. Questions to the students appear in bold typeface, answers and comments—for teacher eyes only—appear in *italicized typeface*.

**What is the name of the map you have?**

*The name appears in two places, above the northeast corner and below the southeast corner. Remember, the top of the map is always north unless otherwise indicated. Look in the bottom margin of the map for a small diagram which is likely to have three arrows indicating the various norths. Note that all of them are toward the top of the map.*

**What does the “MN” stand for?**

*Magnetic north.*

**Why is it important for someone using this map to know the answer to that question?**

*So someone can compensate for the difference between magnetic north—the compass reading—and true north—what the map is based on. This compensation is called the declination.*

**When was this map published?**

*This will vary—look in the bottom margin, usually on the left side.*

**Why do we care?**

*Things may have changed since that time—new roads, towns, buildings, etc.*

**How many degrees north of the equator is the bottom of this map?**

*Remember, each degree contains 60 minutes and each minute of latitude (measurement north or south of the equator) is one nautical mile. Use the latitude markings at the corners to figure this out—it will vary for all maps.*

## The Language of Topo Maps

**Base line** – In the land office grid system, a base line is a selected parallel of latitude used as a starting line for township—north/south— measurement.

**Contour/Contour lines** – lines on maps that pass through points of the same elevation.

**Contour interval** – the designated elevation difference between any two consecutive contour lines on a map. The interval can be different on different maps but it is always the same for an entire map. It is usually listed in the bottom margin at center of most topo maps, near the scales.

**Declination** – The angular difference between true north and magnetic north.

**Dendritic drainage** – A drainage pattern that looks similar to the branches of a tree—*dendro* means “like a tree”—as small streams and brooks converge into larger streams and possibly rivers. (See Figure 11a on page 17.)

**Drainage pattern** – the manner in which the streams, etc., in a particular area flow.

**Elevation** – the distance—in feet or meters—above sea level that a specific point lies. Contour lines indicate elevation.

**Index contour** – The thicker brown lines on a topo map. These lines usually have a number along them that denotes the elevation along the line.

**Intermediate contour** – the thinner brown lines between index contours.

**Latitude** – A measurement of arc on Earth. Measured in degrees north or south of the equator, lines of latitude are called parallels.

**Longitude** – A measurement of arc on Earth. Measured in degrees east or west of the Prime Meridian, lines of longitude are called meridians.

**Nautical mile** – Equal to one minute of latitude—6080 feet (1853.2 meters).

**Oblique** – From an angle that is neither parallel or perpendicular.

**Prime meridian** – The line of longitude which runs from pole to pole through the original site of England’s Royal Observatory in Greenwich. All other

meridians—lines of longitude—are measured east of west of the Prime Meridian.

**Principal meridian** – In the land office grid system, a principal meridian is a selected line of longitude used as a starting line for range—east/west— measurement.

**Quadrangles (“quads”)** – Term for a topographic map with four equal sides. For example, a 7.5 minute-series map is a quadrangle, since it measures 7.5 minutes of latitude by 7.5 minutes of longitude.

**Radial drainage** – A drainage pattern characterized by streams that run away from the center of a high circular or oval landform, such as a dome or a volcano. (See Figure 11c on page 18.)

**Range** – In the land office grid system, range is a six-mile unit of measure east or west of a principal meridian.

**Rule of the V’s** – Phrase used in topographic map study that refers to the characteristic “V” shape a contour line has when it passes through a stream. The bottom of the “V” always points upstream.

**Scale** – Relationship between the distance on a map and the distance it represents on Earth. For example, a scale of 1:24,000 means one unit on the map equals 24,000 of those units when measured on Earth.

**Section** – In the land office grid system a section is a one-mile by one-mile area of land. There are 36 sections in a township.

**Topographic map (also known as topo map)** – A map that uses contour lines and symbols to represent the features—man-made and natural—of the mapped area.

**Township** – In the land office grid system, township has two meanings. Township is measured north or south of a selected base line. A township refers to an actual six-mile by six-mile plot of land.

**Trellis drainage** – A drainage pattern characterized by streams that drain parallel valleys. (See Figure 11b on page 17.)

**USGS** – The United States Geological Survey is the branch of the federal government’s Department of the Interior responsible for creating many types of maps, including topo maps.

Everything in blue is water. Ponds are easy, as are streams, but what about streams that are not a continuous line? Some are indicated by short lines separated by three dots. What type streams are these?

*These are known as intermittent streams—sometimes they flow, sometimes they are dry.*

The most obvious printing on a topo map is the mass of fine brown lines running all over the place. What are these lines called?

*Contour lines.*

Why are some thicker than others?

*The thicker contours are indexed—that is they should have an elevation number written along them somewhere.*

What do the thicker lines have that the others do not?

*Most have elevation labels.*

Earlier you learned this simple rule for using topographic maps, “The closer together the contour lines, the steeper the slope.” Use that knowledge to answer the following:

Are there many steep slopes in the area of your map?

*Answers will vary.*

Do they form any sort of a pattern?

*Answers will vary.*

Remember what you have learned about folding and faulting and erosion.

*(Dana’s classes learn about folding, erosion, and other geologic concepts before working with topo maps.)*

Can you see any patterns of steep or gentle slopes which make you think about fault blocks?

*Answers will vary.*

Topographic maps are great for locating superimposed streams and water gaps. If you find any, give their location by Section, Township, Range.

*Locations will vary, but they should in the proper*

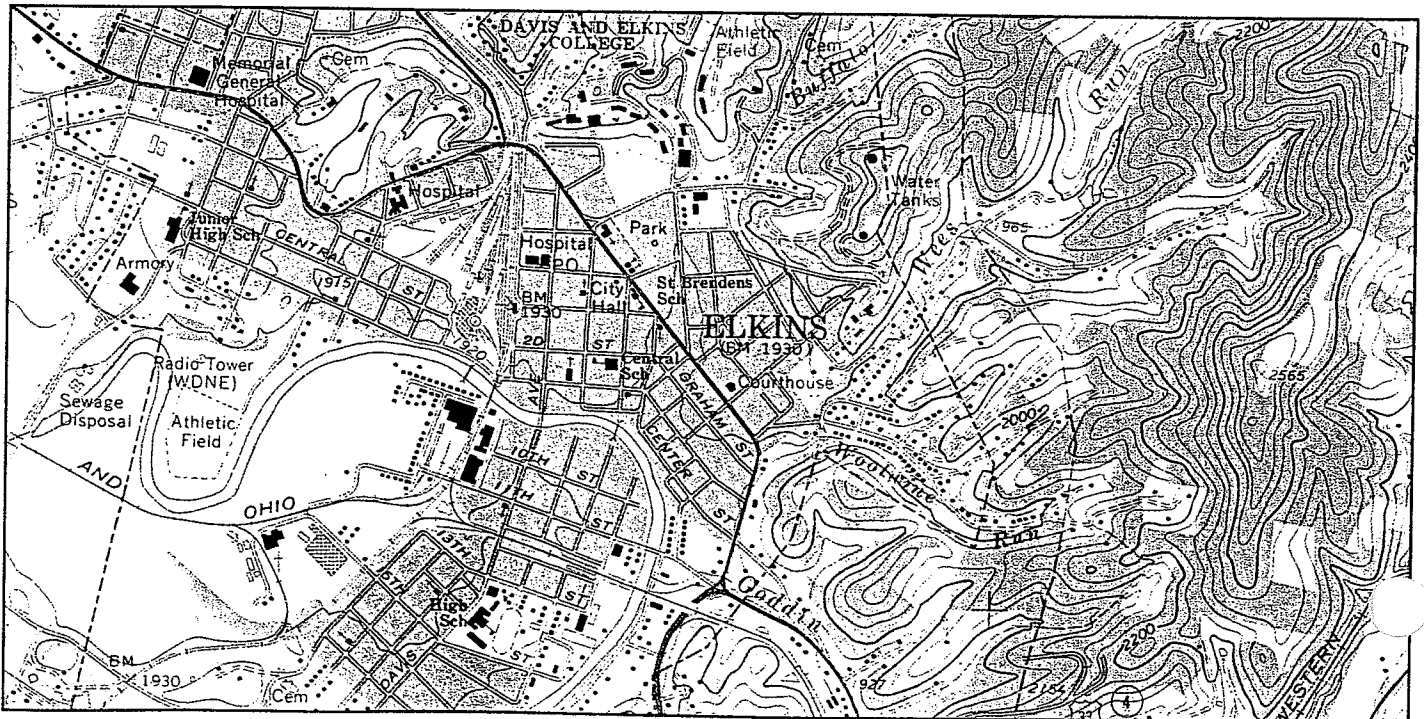
*format: Section \_\_\_\_\_*

*Township \_\_\_\_\_*

*Range \_\_\_\_\_*

Can you see anything about the hills and valleys or the streams, or other features, which might give you a clue as to why the population of the area is as large or as small as it is? Explain.

*Answers will vary.*



## Resources

There are a number of ways to get topographic maps. Many city and county libraries have topographic maps of local areas. Often, local sporting goods—ones that specialize in hiking and related supplies—and map stores carry local topographic maps. The USGS has local offices in certain regions of the country where topographic maps can be purchased. (A local telephone book should list offices in your area.) Local or state government offices may also have maps available.

To obtain aerial photographs, try local environmental consulting firms, state highway departments, state natural resources departments, or the nearest U.S. Bureau of Land Management Office.

Earth Science Information Center  
United States Geologic Survey (USGS)  
507 National Center  
Reston, VA 22092  
1 (800) USA-MAPS

*For information about ordering topographic maps, satellite, and aerial photos.*

U.S. Department of the Interior/Bureau of Land Management Service Center  
Denver Federal Center  
Building 50  
P.O. Box 25047  
Denver, CO 80225-0047

*For information on books or other resources concerning the BLM including the U.S. land office grid system and cadastral surveys—which mark and define the boundaries of federal lands—write and request the PMDS User's Catalog (1994 edition is publication number P-230).*

## Credits

This publication was produced by NSTA Special Publications; Gregg Sekscienski, project editor.

We are grateful to Frank Watt Ireton and Dorothy Stout for reviewing the manuscript.

Special thanks to Ian Zen and Joseph Kerski of USGS who arranged to donate the enclosed topographic maps.

This publication was printed in the U.S.A. by Automated Graphic Systems, Inc.

## Bibliography

- Blandford, Percy W. (1992). *Maps & Compasses*. Blue Ridge Summit, PA: TAB Books.
- Blandford, Percy W. (1992). *The New Explorer's Guide to Maps & Compasses*. Blue Ridge Summit, PA: TAB Books.
- Callister, Jeffrey C. (1986). *A Brief Review in Earth Science—1986*. Newton, MA: CEBCO.
- Kjellstrom, Bjorn. (1975). *Be Expert with Maps & Compass—The "Orienteering" Handbook*. New York, NY: Charles Scribner's Sons.
- Makower, Joel. (1986). *The Map Catalog*. New York, NY: Vintage Books.
- Namowitz, Samuel N., and Spaulding, Nancy E. (1989). *Earth Science*. Lexington, MA: D.C. Heath and Company.
- Press, Frank, and Siever, Raymond. (1986). *Earth*. Fourth Edition. New York: W.H. Freeman and Company.
- United States Department of the Interior/Bureau of Land Management. (1980). *Surveying Our Public Lands*.
- United States Department of the Interior/Bureau of Land Management. (1976). *Surveys and Surveyors of the Public Domain 1785-1975*. (by Lola Cazier) Washington, DC: U.S. Government Printing Office.  
(Stock number 024-011-00083-6)
- United States Department of the Interior/Geological Survey. (1990). *Topographic Maps*. Washington, DC: U.S. Government Printing Office.  
(Publication number 1990-252-213)

