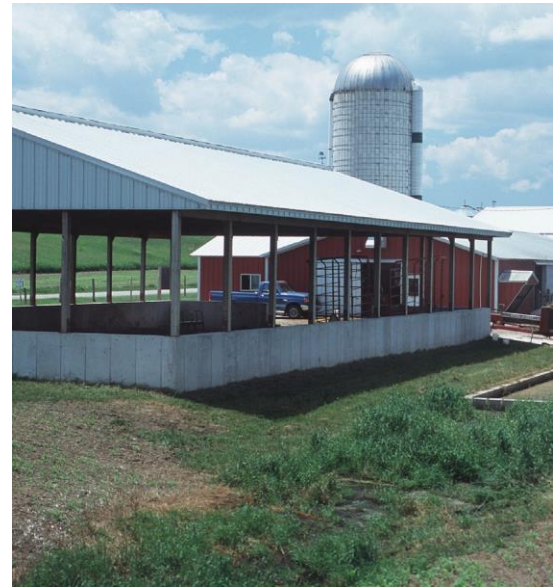


# TRI-STATE Western Lake Erie Basin

*Phosphorus Reduction Initiative*

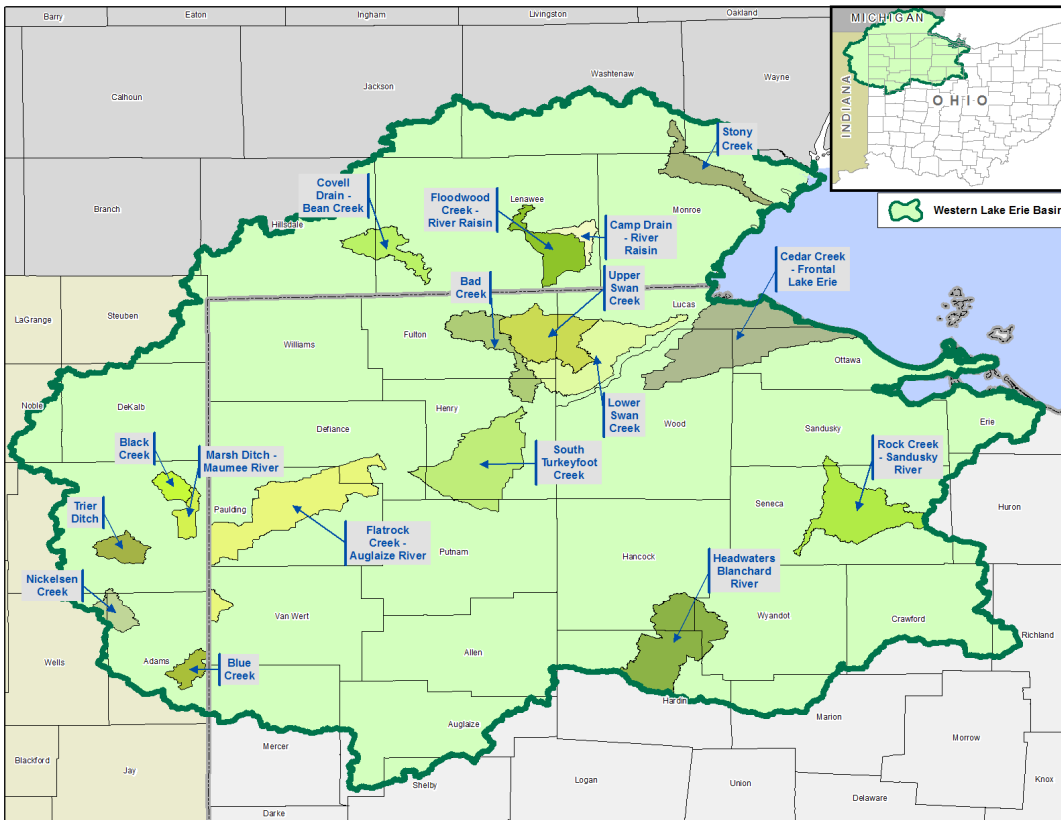
## The Tri-State Western Lake Erie Basin Phosphorus Reduction Initiative

The Tri-State Western Lake Erie Basin Phosphorus Reduction Initiative is a multi-state project to protect the western basin of Lake Erie. The project aims to decrease Harmful Algal Blooms (HABs) by reducing phosphorous (P) and sediment loading. Project partners have identified Natural Resource Conservation Service (NRCS) conservation practices and innovative demonstration practices that farmers can implement to protect soil health, water quality, and prevent fish and wildlife degradation. The Environmental Quality Incentive Program (EQIP) and Agricultural Conservation Easement (ACEP) funds are designated to these efforts. The Western Lake Erie Basin Regional Conservation Partnership Program (RCPP) project was awarded \$17.5 million. Michigan will receive about \$3.35, which is split between EQIP, ACEP and technical assistance.



## MICHIGAN'S PRIORITY PRACTICE LIST

- Comprehensive Nutrient Management Plan** ▶ Develop a livestock waste management plan.
- Nutrient Management Plan** ▶ Develop a nutrient management plan for fertilizers.
- Filter Strip** ▶ Plant species that increase water infiltration and protect water quality.
- Conservation Crop Rotation** ▶ Improved cropping rotation for soil health and water quality management.
- Cover Crop** ▶ Plant one to three species for soil health and water quality management.
- Drainage Water Management** ▶ Install a drainage water control structure and manage it for water quality.
- Grassed Waterway** ▶ Provide means for slowing water flow and increasing infiltration.
- Nutrient Management** ▶ Implement Nutrient Management Plans for nutrients and sediment.
- Residue and Tillage Management – No-Till** ▶ Implement modified tillage and residue management to increase water infiltration.
- Amending Soil Properties with Gypsum** ▶ Improve soil physical/chemical properties to reduce soil erosion and improve infiltration.



## Program Objectives

The Tri-State Western Lake Erie Basin Phosphorus Reduction Initiative will help to reduce sediment and nutrient loading into the western basin of Lake Erie, with an emphasis on reducing total and dissolved reactive phosphorus to reduce the threat of HABs. The specific resource concerns include water quality, water quantity, soil health, and fish and wildlife habitat.

### 2017 Application Dates

January 1 - January 20

### Application Requirements:

Agricultural producers in the Western Lake Erie Basin are eligible to apply

## Contact Information

Lenawee Conservation District &  
NRCS Adrian Field Office  
1100 Sutton Road  
Adrian, MI 49221  
Phone: (517)265-5887

Hillsdale Conservation District &  
Jonesville Field Office  
588 Olds Street, Bldg. 2  
Jonesville, MI 49250  
Phone: (517)849-9890

Washtenaw Conservation District &  
NRCS Ann Arbor Field Office  
7203 Jackson Road  
Ann Arbor, MI 48103  
CD Phone: (734)761-6721  
NRCS Phone: (734)205-0537

Monroe Conservation District &  
NRCS Monroe Field Office  
1137 S. Telegraph Road  
Monroe, MI 48161  
CD Phone: (734)241-7755  
NRCS Phone: (734)241-8540

Jackson Conservation District &  
Jackson Field Office  
211 W. Ganson Street  
Jackson, MI 49201  
CD Phone (517)395-2082  
Phone: (517)789-7716